

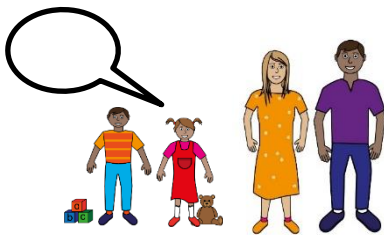
SEND Project - Easy Read Summary

Contents page



What this report is about -
Page 2

What we did - Page 3



What children and young
people told us - Page 6



What parents told us - Page 9



What professionals told us -
Page 12

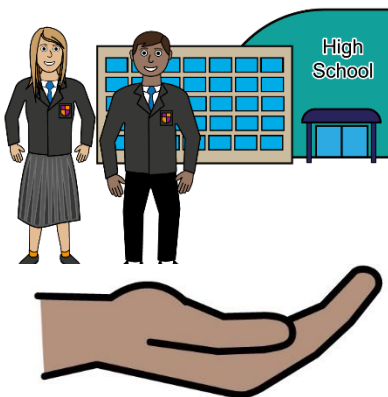


Our recommendations - Page
16

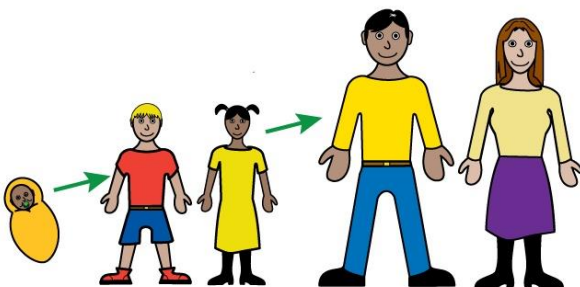
What this report is about.



This report is about help for children and young people with Special Educational Needs and Disabilities in Liverpool. The short word for this is **SEND**.



A child has Special Educational Needs if they need extra help with learning and school.



Children and young people with SEND can get extra help until they are 25 years old.

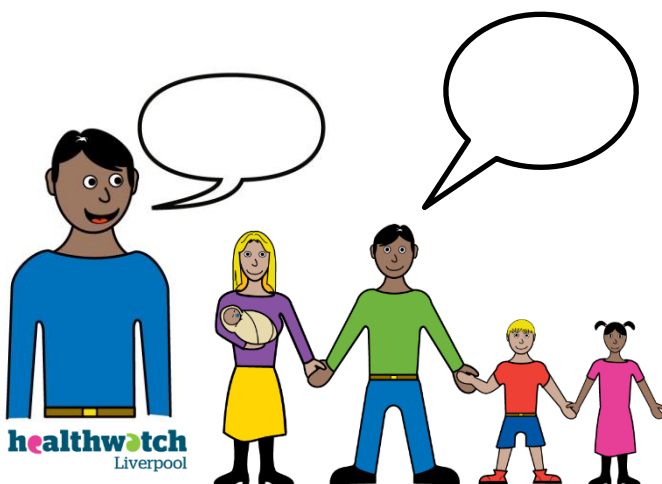
What we did



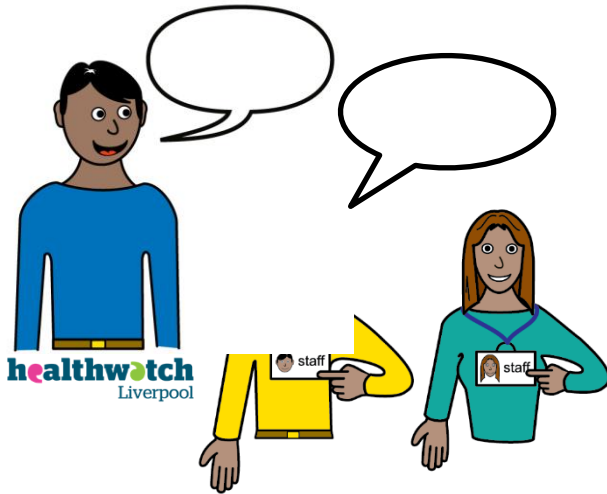
We wanted to find out what people thought of help for children and young people with SEND.



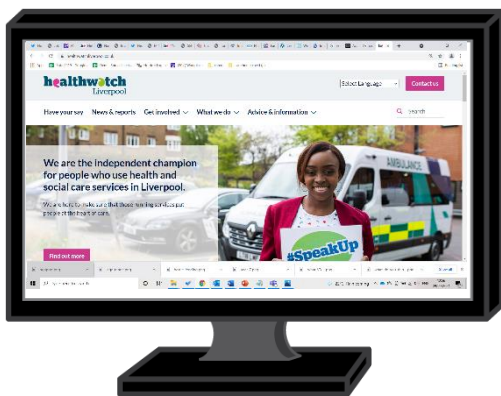
We spoke to over 200 people about help for children with SEND. People told us lots of different things.



We spoke to children and young people with SEND. We also spoke to their parents.



We spoke to professionals.
These are people whose job it
is to help children and young
people with SEND.



We asked people some
questions. We put the
questions on our website.

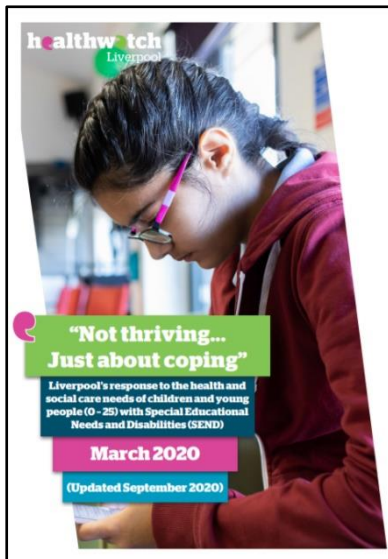


We also talked to people face
to face.

We listened to what everyone told us. Then we wrote a report.

In the report we wrote:

- what people told us
- how help for children with SEND could be better.



We sent this report to Liverpool City Council. We told them what people wanted to be better about help for children with SEND.



What children and young people told us



Most children and young people we spoke to said they had an **Education, Health and Care Plan**.

We call this a **Care Plan** for short.



This is a plan for the kinds of help a child with SEND will get from:

- their school
- doctors
- the council.

What children and young people told us



Most children were happy with the help they got from:

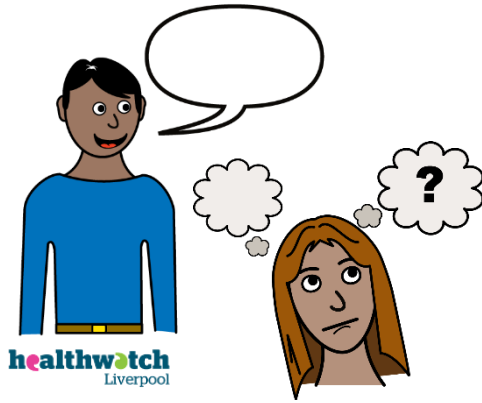
- their doctor
- hospitals
- their school.



A lot of children didn't get to have a say about what was in their Care Plan.



Most children wanted to have more of a say about what was in their Care Plan.



We also asked children and young people what they would like help with as they grow up.

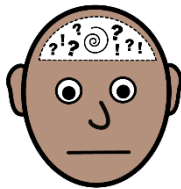
They told us they wanted help with:



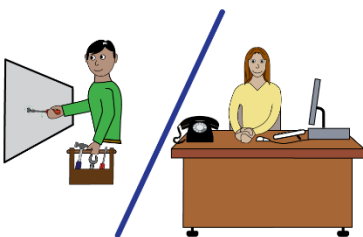
- Money



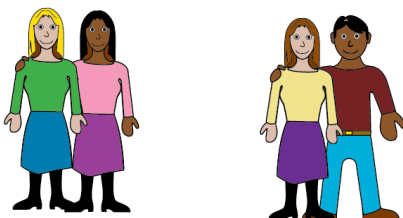
- Living on their own



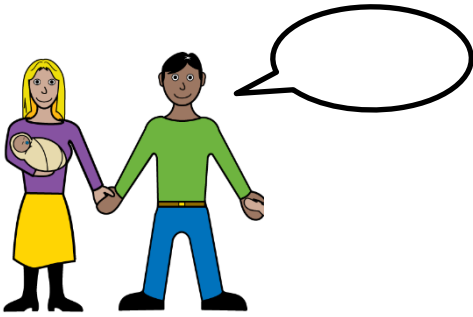
- Mental health



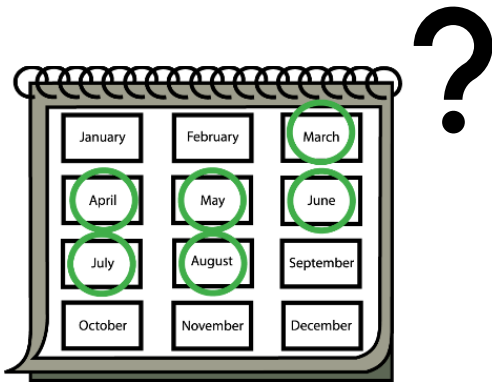
- Finding a job



- Making friends



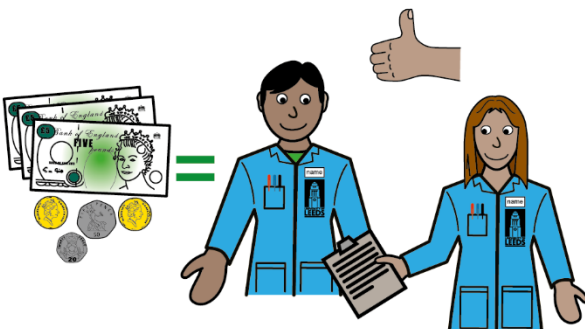
What parents told us.



It took a really long time for children with SEND to get help they needed.



Children did not always get the help they were told they would get.



Some parents had to pay to get help for their children.

What parents told us



Getting information about help for children with SEND is difficult.

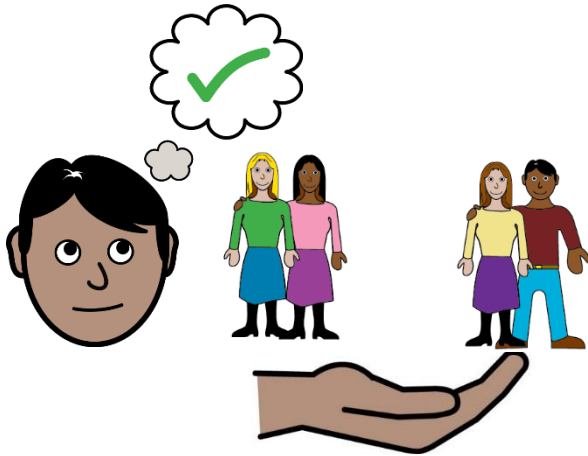


Information about getting help for children is too complicated and hard to understand.

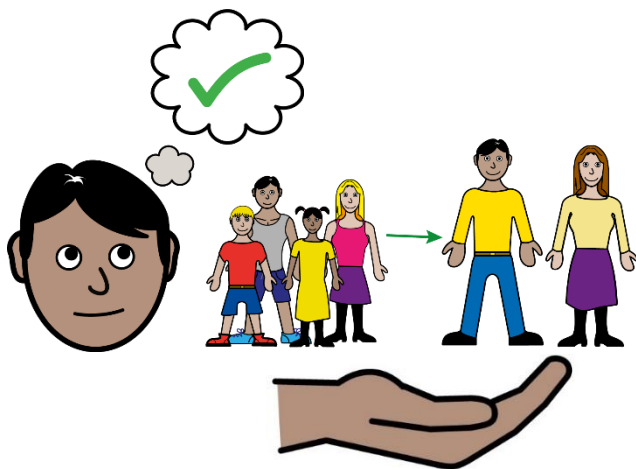


Some parents did not get to have a say about what help their children got.

What parents told us



Some parents wanted their children to have more help with making friends.

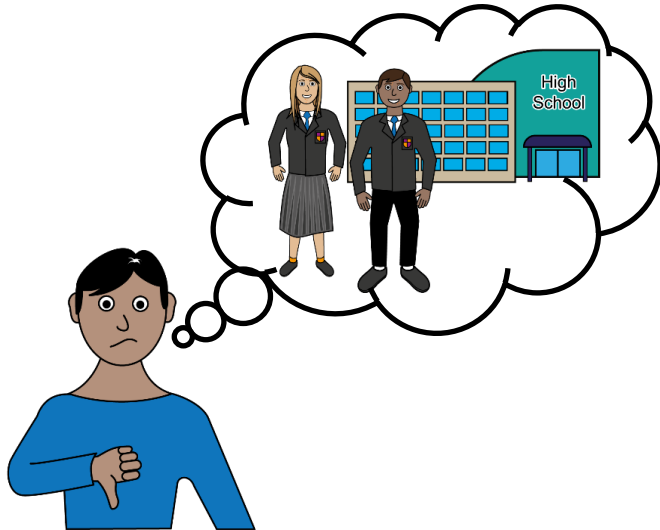


Some parents wanted more help for their children as they left school and became adults.



Getting help for a child with SEND was very difficult. This made lots of parents and children feel very stressed and upset.

What parents told us



Not getting the right help meant their children didn't like going into school.

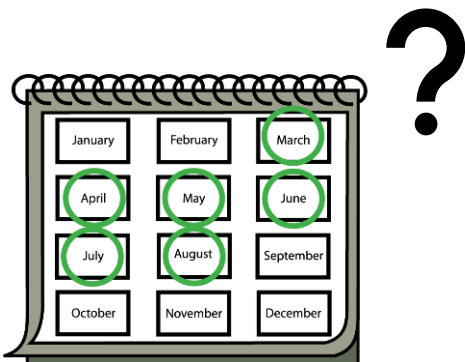


Getting help is more difficult for parents who are Black or Minority Ethnic. Getting help is also very difficult for parents who do not speak English.

What professionals told us



The professionals we talked to were people whose job it is to help children and young people with SEND.

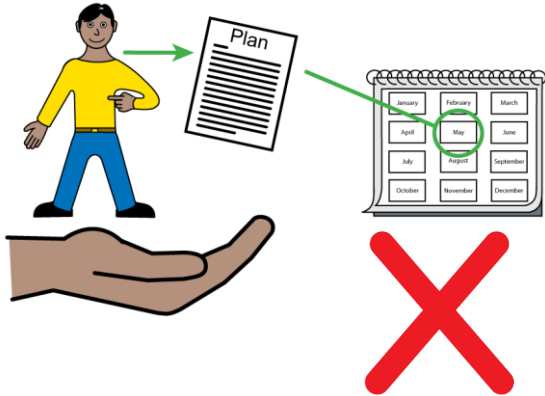


Lots of professionals told us that it took a long time for children with SEND to get help.



Lots of professionals said that this was because they have too much work to do. This means they can't help children with SEND quickly.

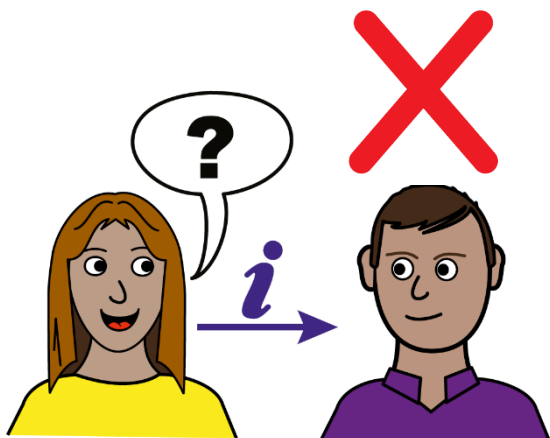
What professionals told us



Care Plans were not always kept up to date.

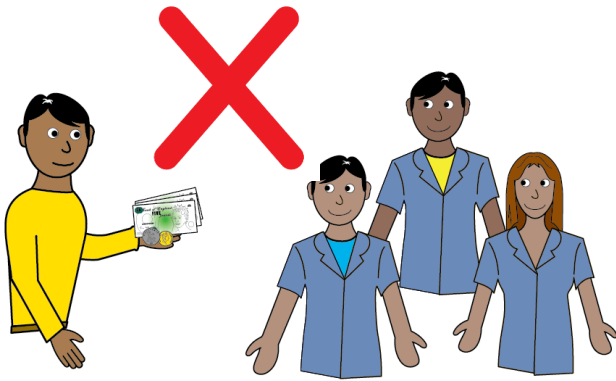


This meant that children did not always get the type of help they needed.



Different professionals helping a child with SEND do not talk to each other.

What professionals told us



Schools and other services do not have enough money to give help to children with SEND.



It is very hard for families who do not speak English very well to get help.

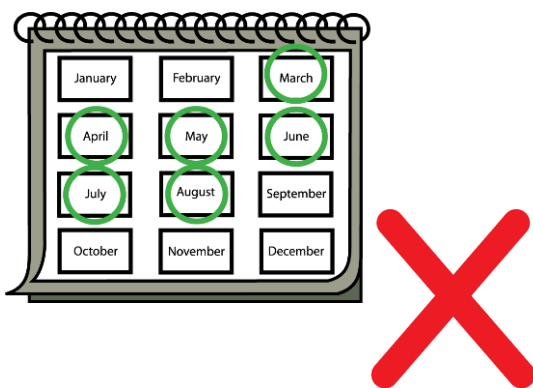
Our recommendations



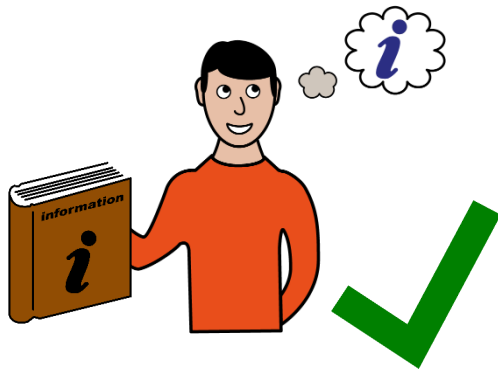
We used what everyone told us to write recommendations for the Council about SEND support.

Recommendations are ideas about how things could be made better.

Our recommendations:



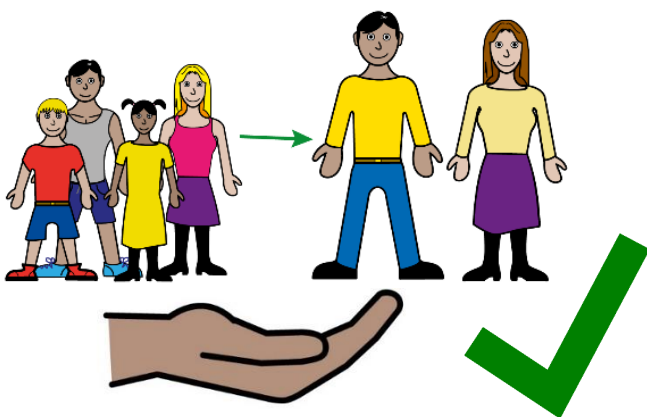
- Make sure children with SEND do not have to wait a long time to get help.



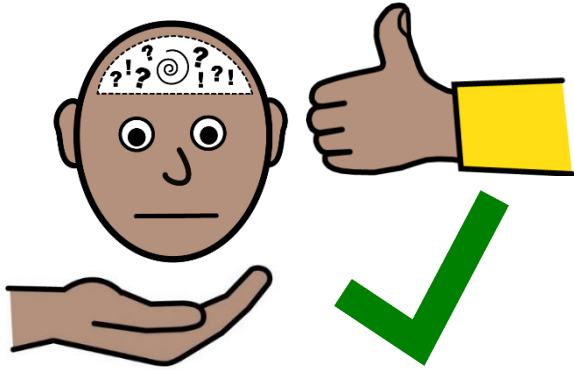
- Make information about help for children with SEND more easy to understand.



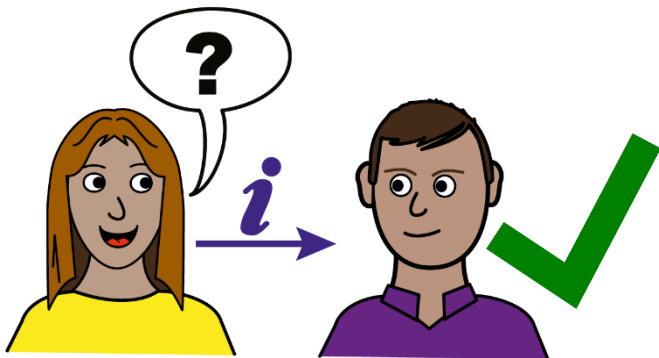
- Make sure children with SEND and their parents have more of a say about their Care Plan.



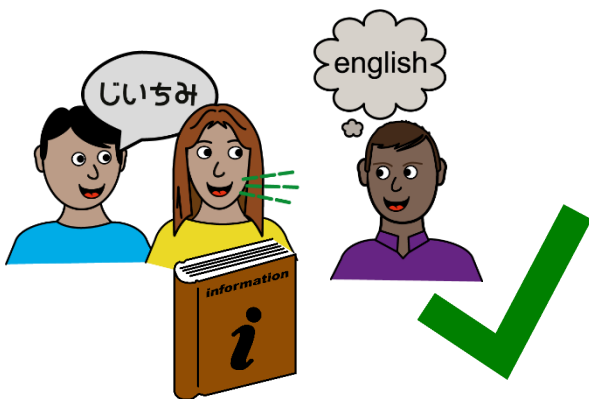
- Give children and young people with SEND more help as they grow up and become adults.



- Make sure that mental health support for children and their parents is better.



- Make sure that different professionals talk to each other.



- Make sure that families who do not speak English well get information they can understand.

The pictures we used in this report were made by Leeds and York Partnership NHS Foundation Trust. All images/resources © LYPFT.